

# YR 10 CURRICULUM NIGHT 2018



**St Paul's**  
Catholic College  
*Booragul*

# Key Focus Points

- ▶ UNIVERSITY
- ▶ VET at St Pauls
- ▶ VET at TAFE-(EVET)
- ▶ SUBJECT PACKAGING



# University Entry

\* An **ATAR** which meets  
the Cut-Off rank.

(Set by the University)

\* HSC Subjects that meet  
the **criteria** of a particular  
Degree.



**St Paul's**  
Catholic College  
Booragul

# UNIVERSITY

## Entry Criteria

Entry criteria is usually interpreted in 3 ways.

### 1.Pre-requisites

(must be studied)

### 2.Assumed Knowledge

(difficult to cope without)

### 3.Recommended Studies

(will assist in your degree)



**St Paul's**  
Catholic College  
Booragul

Year 10 Guide  
to Degrees and  
Subject Choices

# FIND YOUR NEW



**St Paul's**  
Catholic College  
*Booragul*

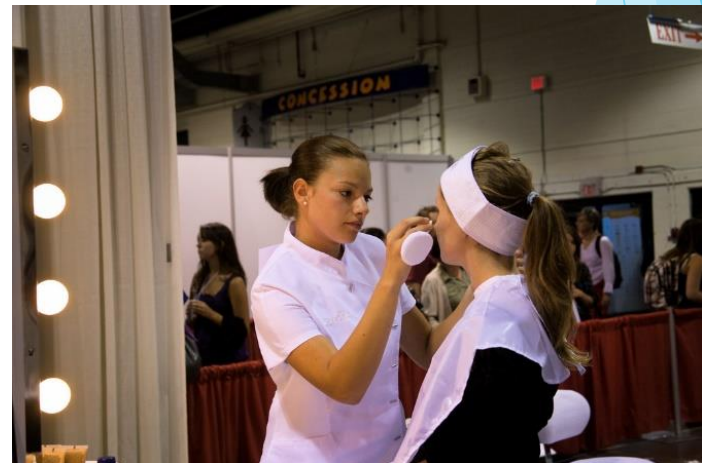




**St Paul's**  
Catholic College  
Booragul



# VET SUBJECTS





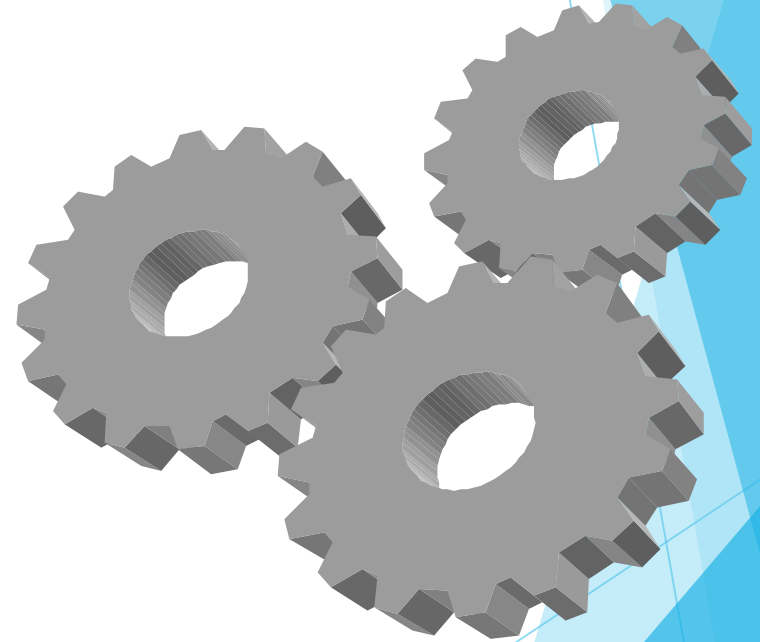
**St Paul's**  
Catholic College  
Booragul

**Vocational education and training (VET)** is a school-based training qualification which provides accredited training in job related and technical skills. It covers a large number of careers and industries like trades administration, retail, hospitality and technology.

**Designed to deliver workplace-specific skills and knowledge**

# VET-Vocational Education & Training

- ▶ VET Subjects do count to the ATAR.
- ▶ VET Subjects are CAT. B subjects which means only ONE can be studied to gain an ATAR.
- ▶ VET subjects are more PRACTICAL/Skill based



**St Paul's**  
Catholic College  
Booragui



# VET-Vocational Education & Training



**St Paul's**  
Catholic College  
Booragul

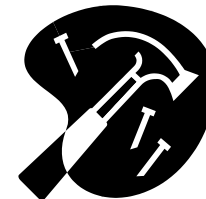
- ▶ VET Subjects have 2 weeks compulsory WORK PLACEMENT.
- ▶ VET Subjects are COMPETENCY based courses designed for direct entry into the workforce.



# VET-Vocational Education & Training

## VET at St Paul's

- ▶ Hospitality.  
(Certificate II)
- ▶ Construction.  
(Certificate II)



**St Paul's**  
Catholic College  
Booragul

# TAFE - EVET

- ▶ EVET are the same as VET courses but delivered offsite.
- ▶ EVET campuses are:
- ▶ Glendale
- ▶ Newcastle
- ▶ Hamilton
- ▶ Wyong



# TAFE - EVET

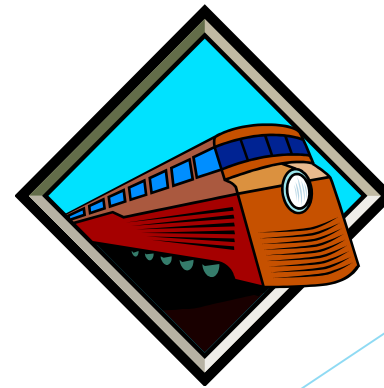
- ▶ EXAMPLES of EVET courses currently being studied by students at St Paul's in 2018.
- ▶ **Children's Services**
- ▶ **Fashion Design**
- ▶ **Tourism**
- ▶ **Animal Care**
- ▶ **Automotive**
- ▶ **Hairdressing**



**St Paul's**  
Catholic College  
Booragui

# TAFE - EVET

- ▶ EVET Courses are run one day a week from 2pm – 6pm.
- ▶ Students leave school early and make their own way to TAFE.

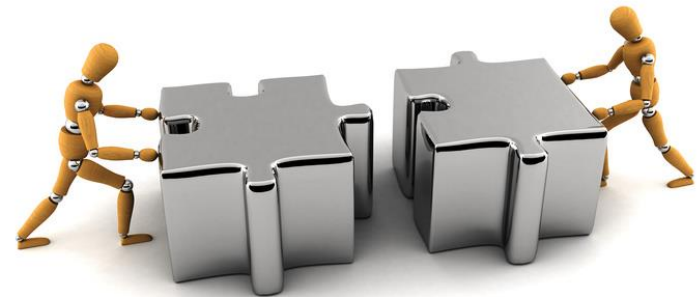


St Paul's  
Catholic College  
Booragui



# SUBJECT PACKAGING

- ▶ CAN BE BASED ON THE IDEA OF....
  - ▶ Gaining a HSC
  - ▶ Achieving an ATAR
  - ▶ Entry into TAFE
  - ▶ Entry into the WORKFORCE
- 
- ▶ It is DIFFERENT for everybody.



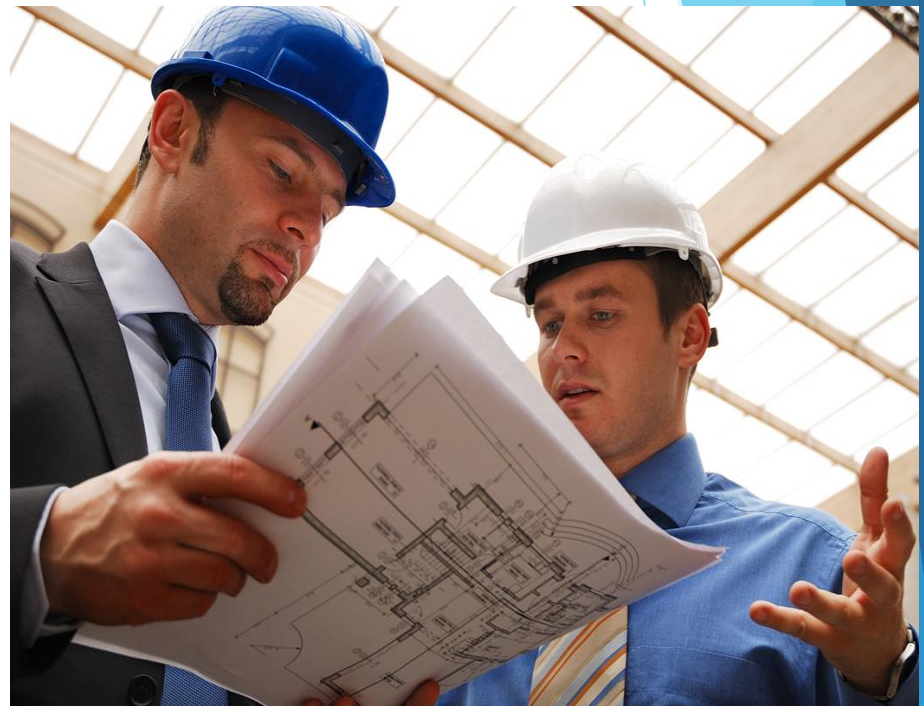
# Example 1- ENGINEERING Degree



## *ATAR Pathway:*

- ▶ 2U English (Advanced)
- ▶ 2U Religion
- 2U Mathematics
- 1U Mathematics Ext.
- 2U Physics
- ▶ 2U Engineering Studies
- ▶ 2U Legal Studies

(13 Units)



# Example 2- NURSING Degree



## *ATAR Pathway:*

- ▶ 2U English (Standard)
- ▶ 2U Religion
- 2U General Mathematics
- 2U Biology
- ▶ 2U Comm.& Family Studies
- ▶ 2U Society and Culture

(12 Units)



# Example 3- TEACHING Degree (Primary/Secondary)

## *ATAR Pathway:*

- ❑ 2U English (Any)-Band 5
- ▶ 2U Religion
- ❑ 2U Maths (Any)-Band 5
- ▶ 2U Ancient History
- ▶ 2U Biology
- ▶ 2U Drama

(12 Units)



**St Paul's**  
Catholic College  
Booragul



# Example 4-TAFE Apprentice /Building Industry

## *Non ATAR Pathway:*

- ▶ 2U English Standard)
- ▶ 1U Catholic Studies
- ❑ 2U Maths Studies
- ❑ 2U Construction /VET
- ❑ 2U Investigating Science
- ▶ 2U Industrial Tech.
- ▶ 1U Sport & Rec

(12 Units)





# Example 5- Hospitality/Administration

## ▶ *Non ATAR PATHWAY:*

- ▶ 2U English Standard)
- ▶ 1U Catholic Studies
- ❑ 2U Maths Studies
- ❑ 2U Business Services.(EVET)
- ❑ 2U Hospitality(VET)
- ▶ 2U Society & Culture
- ▶ 1U Sport & Rec
  
- ▶ (12 Units)



# Example 6- Electrical/Metal Trades

- ▶ ***Non ATAR PATHWAY:***
- ▶ 2U English Standard)
- ▶ 1U Catholic Studies
- ❑ 2U Maths Studies
- ❑ 2U Investigating Science
- ❑ 2U Electrotechnology  
(EVET)
- ▶ 2U Industrial Tech.
- ▶ 1U Sport & Rec
  
- ▶ (12 Units)



# Subject Information Sessions

- ▶ 6 Sessions
- ▶ 13 Mins Per Session
- ▶ Bell will indicate the end of each session



# INVITATION to (DC Library)

- ▶ General Questions
- ▶ Clarifications
- ▶ Appointments
- ▶ Advice

