

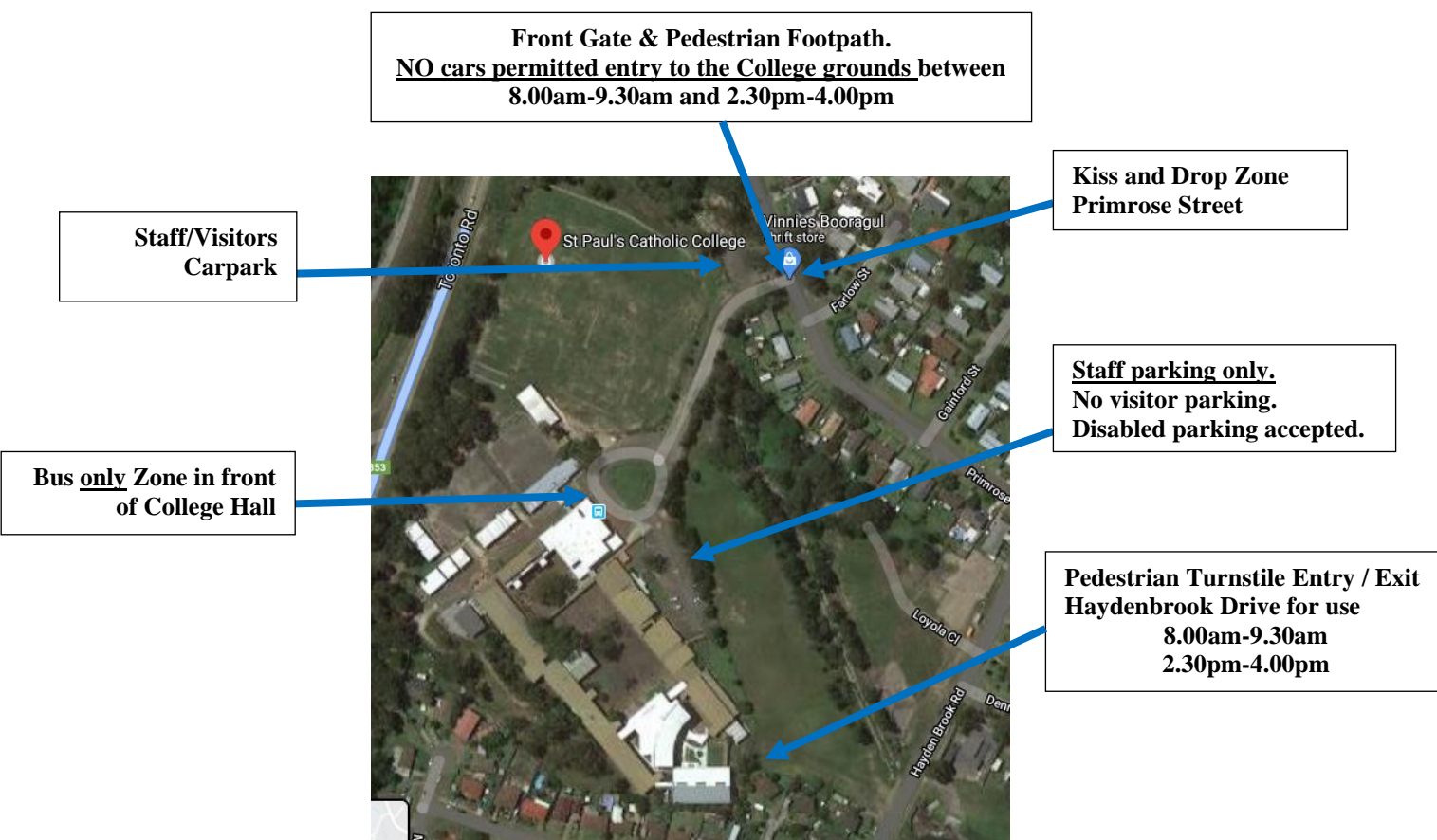
## Enrolment Information

### Setting a good example

Safety of students as they travel to and from school each day is important. It is expected that parents/carers, grandparents and family members will support the school through role modelling safe road use behaviours.

These include:

- Using designated footpaths or walking in areas away from the road.
- Not calling students to cross the roads.
- Crossing roads away from parked cars.
- Parking correctly in designated areas.
- Getting children in and out of the car on the footpath side.
- Using seatbelt restraints for all passengers prior to driving away.
- Noting that the rear curb side door is usually the safest door for students to get in and out of a vehicle.
- Waiting safely at bus stops and waiting until the bus has gone and choosing a safe place to cross.



### Arriving and Departing

Parent/carers and family members are encouraged to walk with their child to school to reduce traffic congestion around the school, to promote physical activity and to teach children about correct road use behaviours.

There are two points of entry into St Paul's Catholic College for this Year 7 to 12 College site:

- One **pedestrian** access gate on Primrose street.  
Students will follow the designated path from Primrose Street, past the Oval into the College.
- One pedestrian Turnstile gate on Haydenbrook Drive (for use 8.00am - 9.30am and 2.30pm – 4.00pm)  
Students will walk on the grass path to the Turnstile gate into the College grounds.

Parents/carers and students are expected to use the above two access points to enter the College.

There are no pedestrian crossing facilities available so students should Stop, Look, Listen, Think before crossing any road and cross in an area away from parked cars and especially buses. Walk quickly and directly across the road. Pedestrians should avoid distractions like ipods, headphones, mobiles when crossing the road.

Students are to be careful crossing in the parent visitor/staff top carpark as cars may be entering.

### Arrival and Departure by car:

For those parents/carers that need to drive their children to school, there is adequate parking in surrounding streets. For those parents needing to come to the office, they can park in the top visitor carpark on immediate entry to the college.

There is also a kiss and drop zone on the school side of Primrose Street where parents can drop their child off. Drivers are expected to abide by these parking regulations.

Restricted parking signs are in place around the school site to increase Student's safety. Drivers must abide by these parking regulations.

The College is located in a 40km school zone where a 40 km speed limit applies for the hours of 8.00-9.30am and 2.30-4.00pm on school days. The speed limit is lowered to 40km during these hours to increase the safety of the students arriving and departing the school. Drivers **must** abide by these speed regulations.

**No unauthorised cars can enter past the College front gates between 8.00-9.30 and 2.30-4.00.**  
**Parents can NOT drop students at the bus drop zone at the College roundabout during this time.**  
**There is no kiss and drop zone on the College grounds.**

Wet weather days are particularly hazardous for children as traffic increases, visibility of children is decreased, and slippery roads make driving conditions more difficult. Reduce speed, park correctly abiding by parking regulations. Students are encouraged to use umbrellas and raincoats on these wet days.

### Arrival and Departure by bus:

School buses enter the College front gates and drop the students in front of the school hall in the morning. In the afternoon students will line up as directed by school supervising staff. Staff will oversee student entry onto buses.

When waiting for a bus, students should stand well away from the road back from the kerb. When getting off a bus should they need to cross a road, students should choose a safe place to cross.